

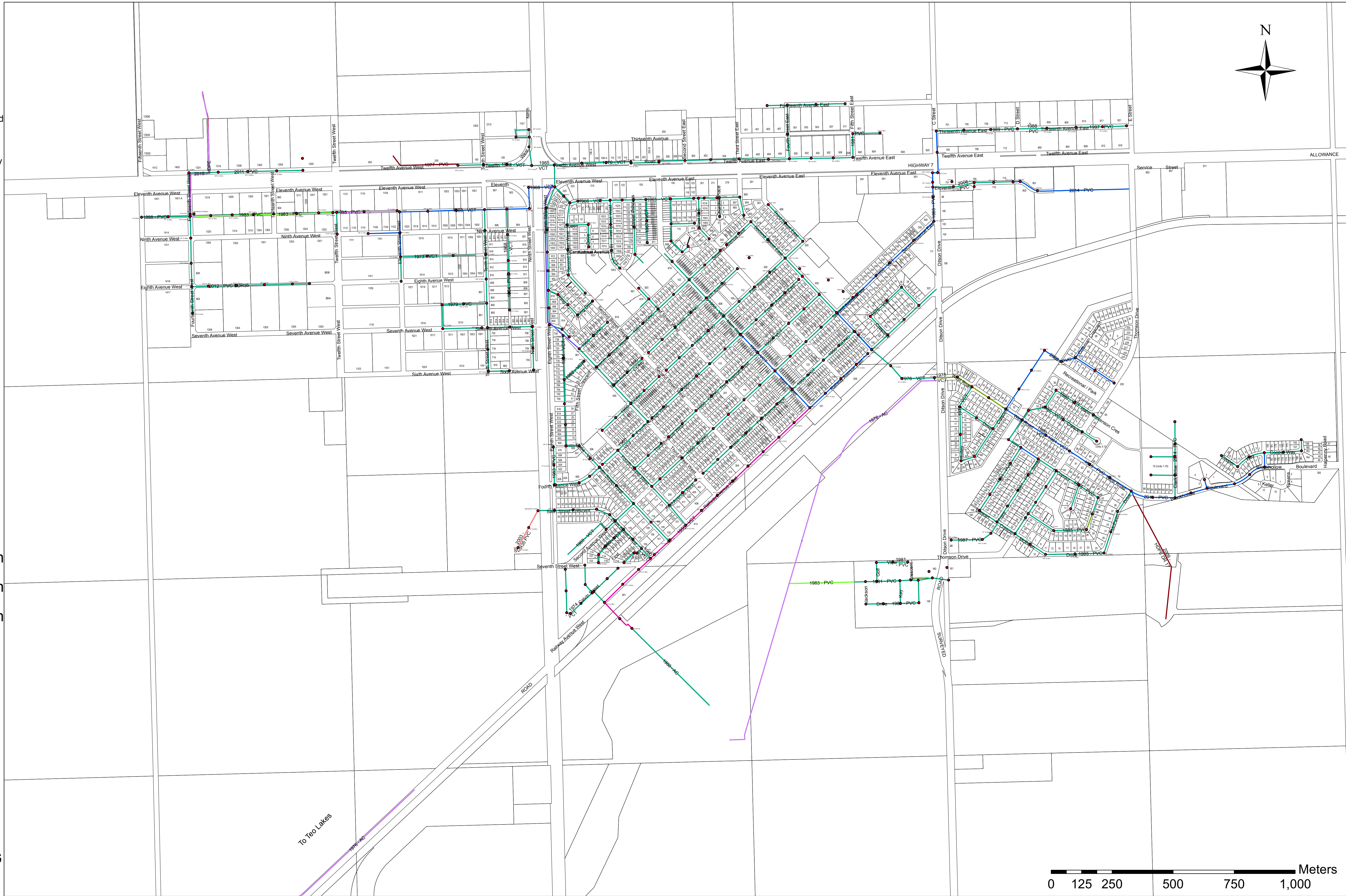


Town of Kindersley Sanitary Sewer Invert Map

Disclaimer: The Town makes no guarantee as to the exact inverts (elevations) of the underground sanitary systems shown. The inverts of the sanitary systems must be verified by the owner/designer/appllicant of said underground sanitary systems prior to any design and/or construction. Known invert measurements are shown for each manhole.

Diameter

- Gravity 100mm
- Gravity 150mm
- Gravity 200mm
- Gravity 250mm
- Gravity 300mm
- Gravity 375mm
- Force Main 50mm
- Force Main 150mm
- Force Main 200mm
- Force Main 250mm



Date Drawn: July 14, 2016
 Drawn By: MG/EB